



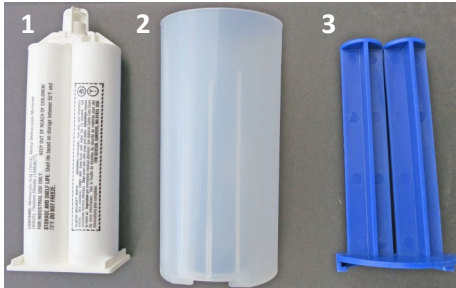
Easy Spa Parts

We know what you need.

Preparing to Use the 2-Part Epoxy Kit without a Mixing Nozzle

Requires:

1. Epoxy
2. Barrel
3. Plunger
4. Caulking gun (not pictured)



**Plastic Welder 2-Part Epoxy begins to set up in 1-3 minutes.
Be sure your project is ready before opening the epoxy tube.**

Step 1: Twist and remove epoxy tip.



Step 3: Insert epoxy, plunger, and barrel into caulking gun.



Step 2: Insert epoxy tube into barrel.





Easy Spa Parts

We know what you need.

Applying Epoxy without Mixing Nozzle

Step 1: Wearing rubber gloves, squirt some epoxy onto a paper plate.



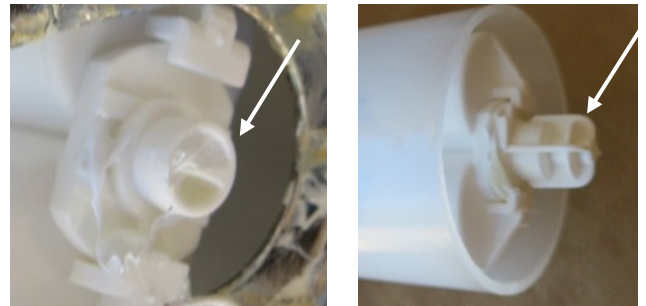
Step 4: Use a rag to wipe the excess epoxy from tip of tube.



Step 2: Use a plastic knife to mix the epoxy until it is one color.



Step 5: When the tip is clean, reinstall the protective cap.



Step 3: Use the knife to carefully apply the epoxy onto the desired location.

